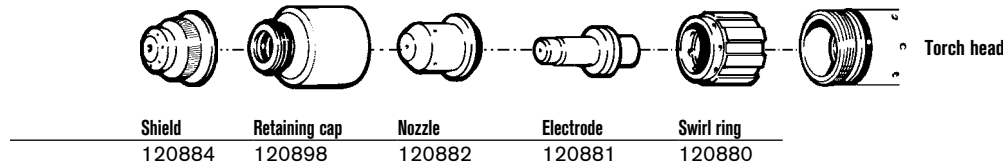


Hypertherm[®] powermax190c[®]

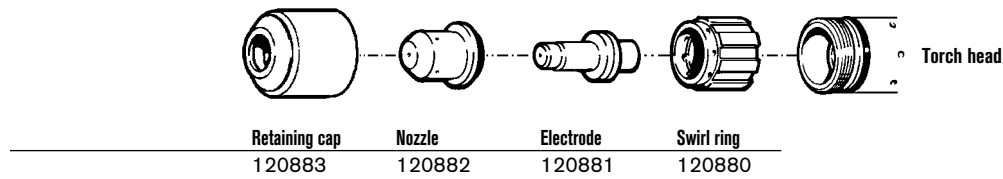
PAC105T hand torch consumables



Shielded consumables



Unshielded* consumables



TECHNOLOGIES

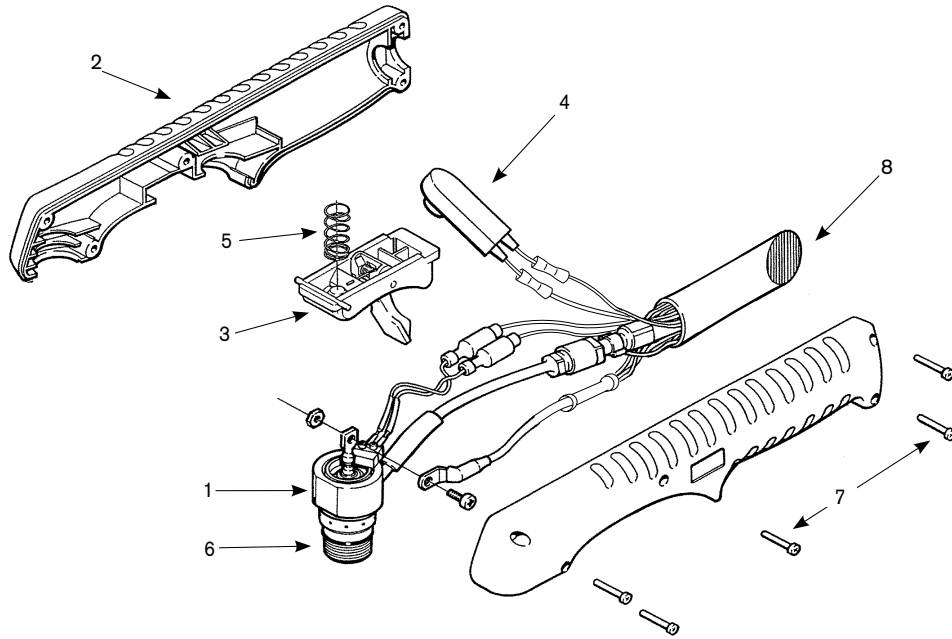
Vented shield

* In countries following CE standards, unshielded consumables may only be used in mechanized torch applications.

Hypertherm, Powermax and PAC are trademarks of Hypertherm, Inc. and may be registered in the United States and/or other countries.

powermax190c

PAC105T hand torch assembly



Assembly

Part number	Description
128833*	PAC105 hand torch assembly with 20' (6.1 m) leads
1. 120874	Torch main body with switch
2. 001288	Handle (includes both halves)
3. 002244	Safety trigger assembly
4. 005202	Switch, torch pushbutton
5. 027254	Trigger spring
6. 058503	O-ring, Viton .625 x .070
7. 075339	Screws #4 x 1/2" (five required)
8. 128478	Torch lead replacement, 20' (6.1 m)
060133	Work lead with clamp 15' (4.6 m)

*Assembly includes consumables

