

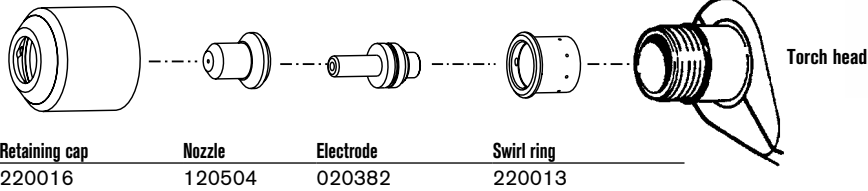
Hypertherm®

powermax350

PAC110 hand torch consumables



Extended* consumables



Retaining cap
220016

Nozzle
120504

Electrode
020382

Swirl ring
220013

Torch head

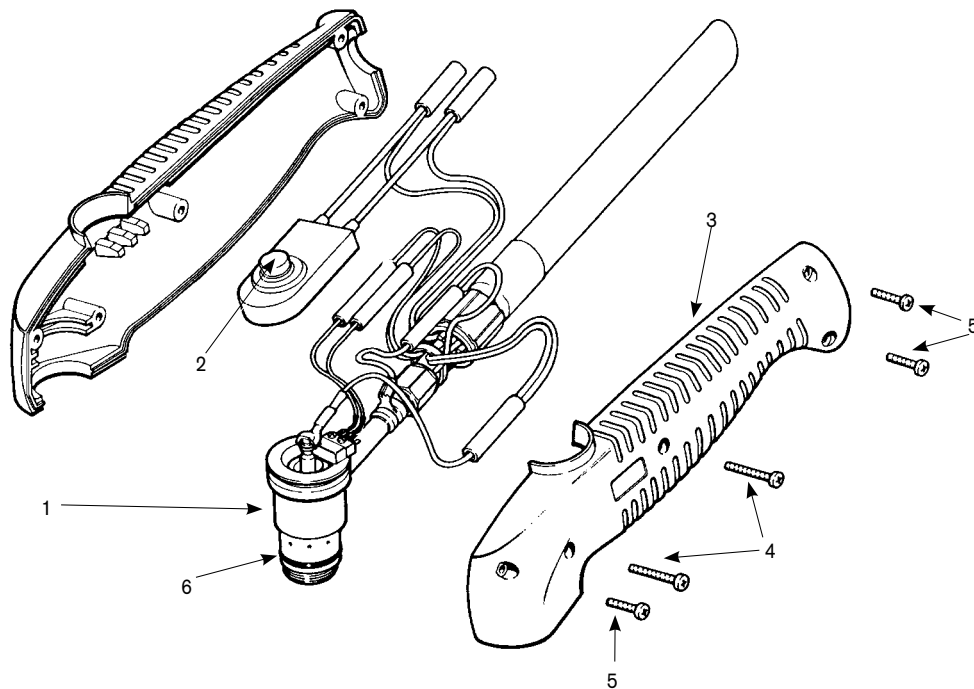


* In countries following CE standards, unshielded consumables may only be used in mechanized torch applications.

Hypertherm, Powermax and PAC are trademarks of Hypertherm, Inc. and may be registered in the United States and/or other countries.

powermax350

PAC110 hand torch assembly



Assembly

Part number	Description
070057*	PAC110 hand torch assembly with 15' (4.6 m) leads
070058*	PAC110 hand torch assembly with 25' (7.6 m) leads
070779*	PAC110T hand torch replacement with 20' (6.1 m) leads
1. 020588	Torch main body with switch
2. 005094	Switch, torch pushbutton
3. 001192	Handle (includes both halves)
4. 075341	Screw, #4 x 3/4" (two required)
5. 075339	Screw, #4 x 1/2" (three required)
6. 044016	O-ring, Buna - N 90 Duro
029241	Torch leads, 15' (4.6 m)
029257	Torch leads, 25' (7.6 m)
060169	Work lead with clamp, 15' (4.6 m)

*Assembly includes consumables

