

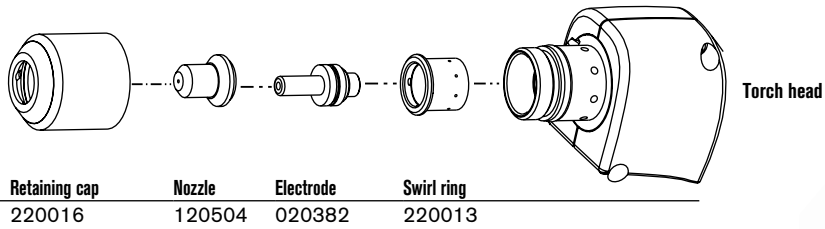
# Hypertherm®

## powermax380

### PAC110T hand torch consumables

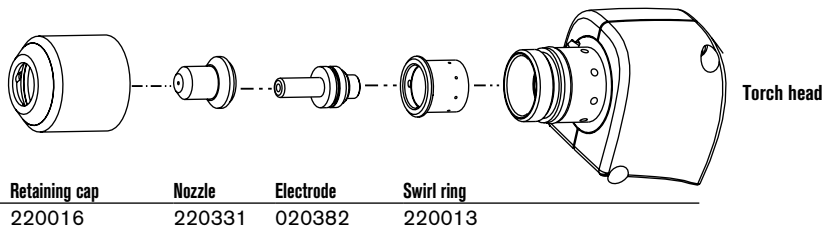


#### Extended\* consumables



Retaining cap	Nozzle	Electrode	Swirl ring
220016	120504	020382	220013

#### FineCut consumables



Retaining cap	Nozzle	Electrode	Swirl ring
220016	220331	020382	220013

TECHNOLOGIES

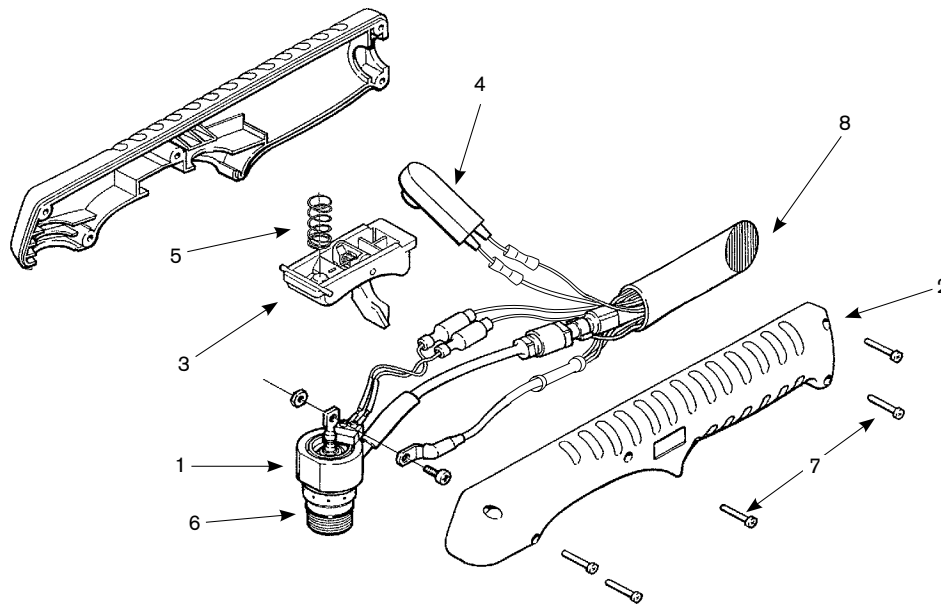
**FineCut®**

\* In countries following CE standards, unshielded consumables may only be used in mechanized torch applications.

Hypertherm, Powermax, PAC and FineCut are trademarks of Hypertherm, Inc. and may be registered in the United States and/or other countries.

# powermax380

## PAC110T hand torch assembly



### Assembly

	Part number	Description
	070071*	PAC110T hand torch assembly with 20' (6.1 m) leads
1.	120976	Torch main body with switch
2.	001288	Handle (includes both halves)
3.	002244	Safety trigger assembly
4.	005202	Switch, torch pushbutton
5.	027254	Trigger spring
6.	058503	O-ring, Viton .625 x .070
7.	075339	Screws #4 x 1/2", (five required)
8.	060208	Torch lead replacement, 20' (6.1 m)
	060169	Work lead with clamp, 15' (4.6 m)

\*Assembly includes consumables

